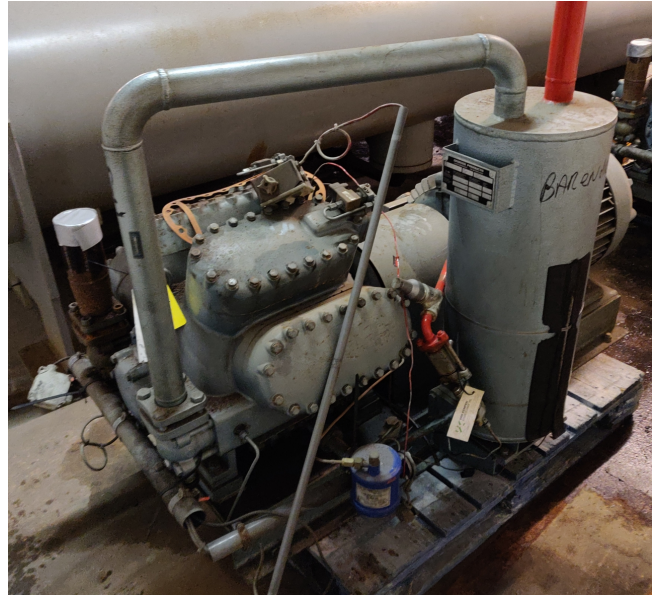


Grasso RC86

Specifications

Marca	Grasso
Tipo	RC86
Refrigerante	Freon
kW at -10°C/+40°C	110,4
kW at -20°C/+40°C	66,3
kW at -30°C/+40°C	35,2
Electromotor Specs	55
Sober Bancada	✓
Manómetros de Presion	✓
Comentarios	R22 or other freon types
Tamaños	1860x760x790 mm (LxWxH)
Stock	2



Description

Used Grasso RC86

Used GEA/Grasso RC 86 compressor // 270m³/h / 1500/1800 RPM // Electric motor: MOT XF250M04 129H / 380V / 1475RPM

